



# St. Margaret's Secondary School

**Sec 2-1 to 2-4**

**Date: 03 March 2022**



# Let our Light Shine!

Celebrating 180 years of Charity, Patience, Devotion





# Programme

Time	Programme
5.45 pm	Development of Talents to Serve (DOTS) Sec 3 Subj Combination Microsite
6.00 pm	Main Room 1. Principal's Address
6.30 pm	2. Education and Career Guidance (ECG Team) 3. Sec 3 Subject Combination Matters (HOD/Science)
6.55 pm	<b><u>Breakout Rooms</u></b> Time with Form Teachers
7.15 pm	<b><u>Main Room</u></b> Q&A







## School Leaders



**Vice-Principal**  
(Academic)  
**Ms Susan Toh**



**Principal**  
**Ms Linda Lim**



**Vice-Principal**  
(Administration)  
**Ms Chrystine Woon**





# Key Personnel





# Assistant Year Heads



**Sec 1 AYH**  
**Mdm Suryati Bte**  
**Mail**



**Sec 2 AYH**  
**Ms Carol Soh**



**Sec 3 AYH**  
**Ms Lum Ying Lee**



**Sec 4 & 5 AYH**  
**Mrs Sharon Tan**



# Communication Channels

## Print

- Publications
- Student Handbook,
- Principal's Monthly Letter
- Termly Progress Reports

## Events

- Parent-Teacher Meeting

## Non Print

- Tel: 64664525
- School Website
- Email - **stmargaretss@moe.edu.sg**
- Email addresses of all FTs and Subj Trs
- Parents' Gateway

## People

- Formal/ Informal discussions between parents & staff



# Communication Channels

Tel: 64664525 (Office)

Website: [www.stmargaretssec.moe.edu.sg](http://www.stmargaretssec.moe.edu.sg)

Email: [stmargaretss@moe.edu.sg](mailto:stmargaretss@moe.edu.sg)

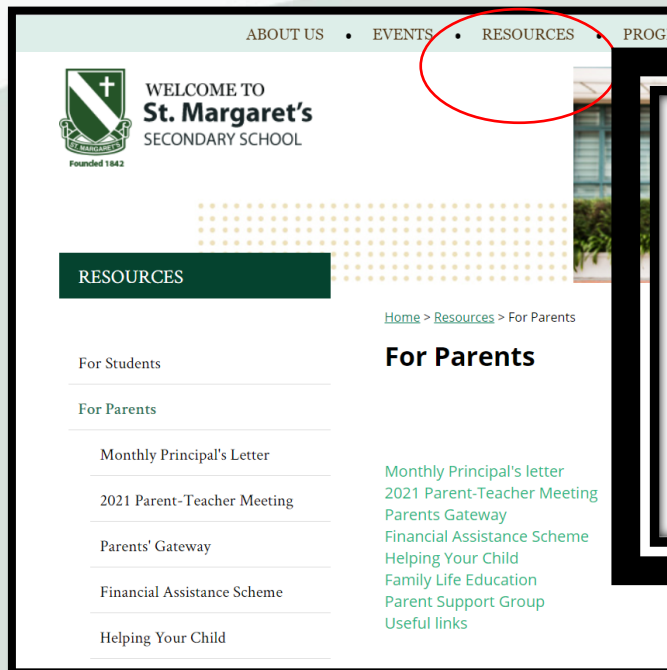
Email addresses of Form and Subject Teachers

Note: For students who are given mobile phone number of teachers, please contact teachers within working hours (Mon – Fri: 7.30am – 5.00pm)





## Slides and Resources



In this Parent Kit issue, we share tips and resources on how you can help your child with the following:

- Practise appropriate device usage
- Manage over-reliance on devices
- Handle cyber bullying
- Show cyber kindness
- Discern real news from fake news



NEW ON PARENTS GATEWAY!

## PARENTING RESOURCES BETA

Parents will be able to view resources and tips in the new 'Parenting Resources' on the 'Services' tab.

Here are 3 key features!

### MOE RESOURCES AT PARENT'S FINGERTIPS

Find Schoolbag articles and Parent Kit issues specially curated by MOE.

**SCHOOLBAG**  
THE EDUCATION NEWS SITE

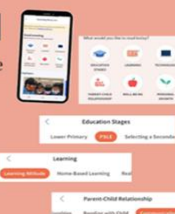
**Parent Kit**



### 6 CATEGORIES TO BROWSE FROM

There are also 27 topics of resources available ranging from 'Learning Attitude', 'Cyber Wellness' to 'School-Home Partnership'.

We will continue to make more useful resources available for parents through this platform.



3

### HIGHLIGHTS & LATEST!

This section will highlight recommended reads and the latest resources to parents.



### HOW WILL PARENTS BE INFORMED?

The Communications and Engagement Group will be informing parents of this new addition via a **Parents Gateway announcement** on 7 Feb 2022.





## Supporting your child's transition through

# Secondary School

Build a caring home environment to nurture the social and emotional skills of your child using these S.A.F.E. tips.

## SUPPORT

- **Find out** how your **child's preferences** are changing. Show interest by **asking open-ended questions**.
- **Make a habit of chatting** at a fixed time each day.  
E.g. At dinner time.

## FAMILIARISE

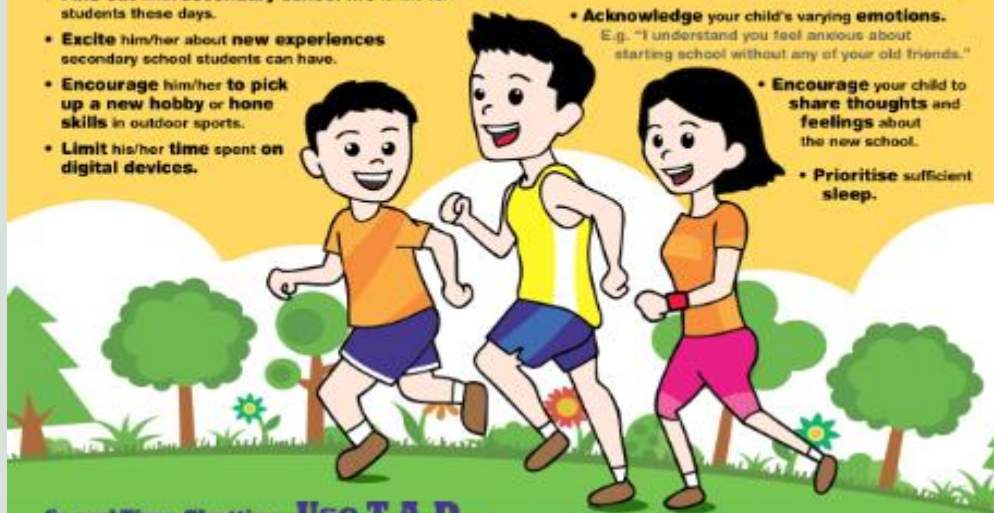
- **Find out** what **secondary school life** is like for students these days.
- **Excite** him/her about **new experiences** secondary school students can have.
- **Encourage** him/her to **pick up a new hobby** or **hone skills** in outdoor sports.
- **Limit** his/her **time spent on digital devices**.

## AFFIRM

- **Remember** your **child's strengths**. **Build his/her self-esteem** in those areas.  
E.g. "You have the unique ability to get along well with people."
- **Praise and affirm efforts** in front of relatives and friends.  
E.g. "She is very helpful towards her grandparents."

## EMPATHISE

- **Acknowledge** your child's **varying emotions**.  
E.g. "I understand you feel anxious about starting school without any of your old friends."
- **Encourage** your child to **share thoughts and feelings** about the new school.
- **Prioritise** sufficient **sleep**.



## Spend Time Chatting. Use T.A.D.

### Talk

Talk about the different realities faced by teens these days compared to the past.

E.g. How you communicated with friends without social media.

### Ask

Ask about his/her thoughts and feelings on people and events around him/her or in the news.

E.g. What are some ways of having wholesome fun? How does he/she feel about the different types of jobs that adults do?

### Discuss

Discuss some acceptable boundaries with regard to the use of electronic devices.

E.g. What are some rules for having a mobile phone (with or without a data plan)?

## QUICK TIPS

- **Listen attentively** to understand what your child might be feeling and thinking.
- **Avoid providing advice immediately** when not asked.



Ministry of Education  
SINGAPORE

These tips may be used with children of other ages too. It depends on each child's needs. Using these tips as part of your child's journey through the school years can help ease anxiety and worries, and build warmer and closer relationships at home.



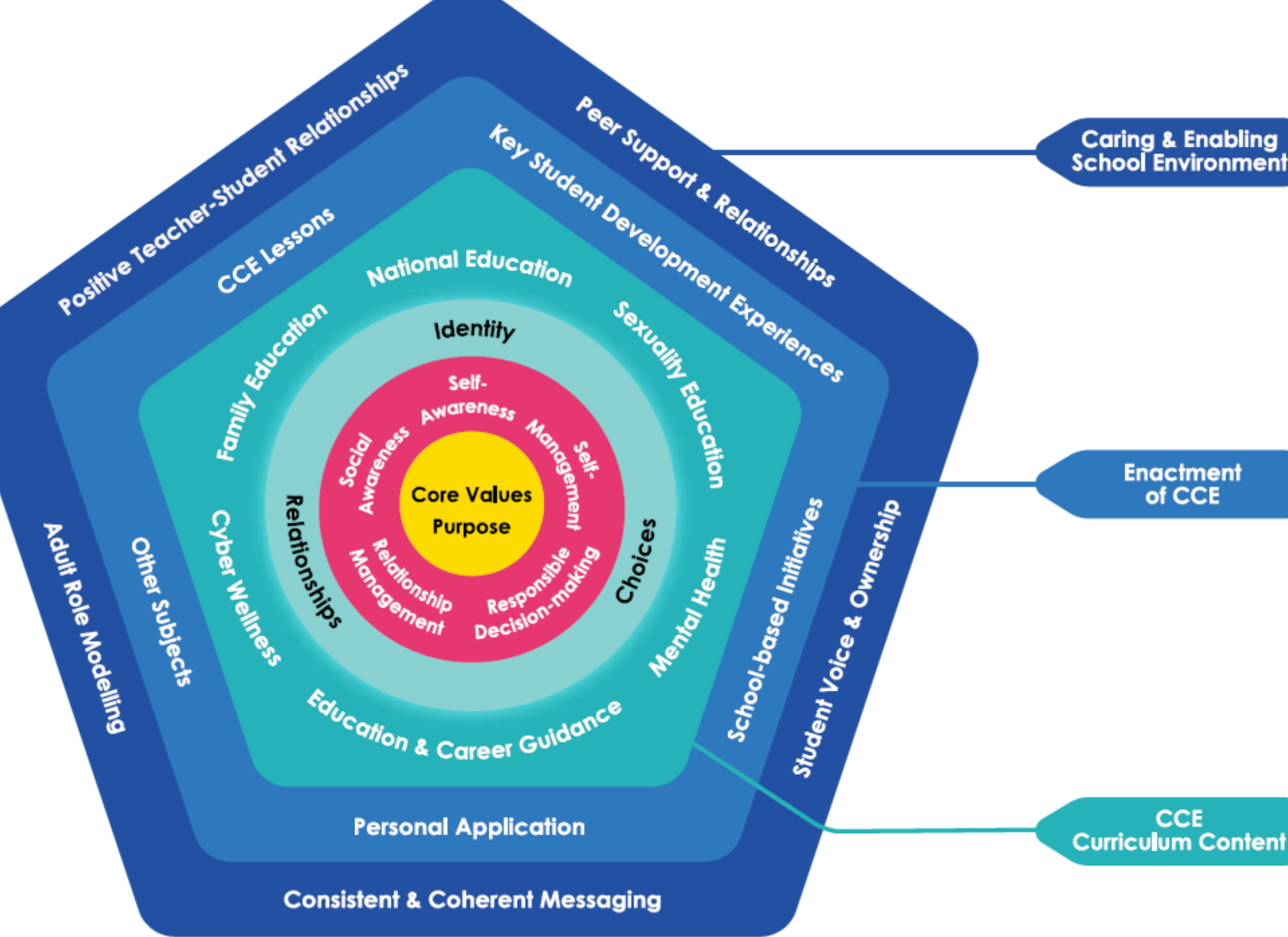
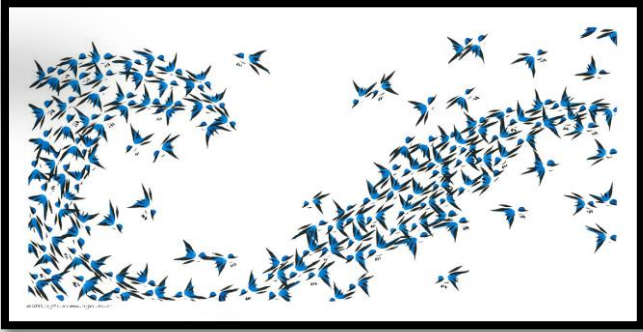


Figure 1: CCE Curriculum Frame



#BeWell  
#BeConnected  
#BeALight





## Top Questions @ Registration:



How is my girl coping?

- Academic
- Social
- Emotional

(Specific)

→ FT and AYH

→ ECG and Sch Counsellors



- Institute of Higher Learning
- Subject Combination
- Weighted Assessment

Subject Combination &  
Ed Career Guidance segments



- CCA and LEAPS Calculation
- Leadership Opportunities
- Use of PLDs

Q&A Segment



# Blended Learning and Home-based Learning Days

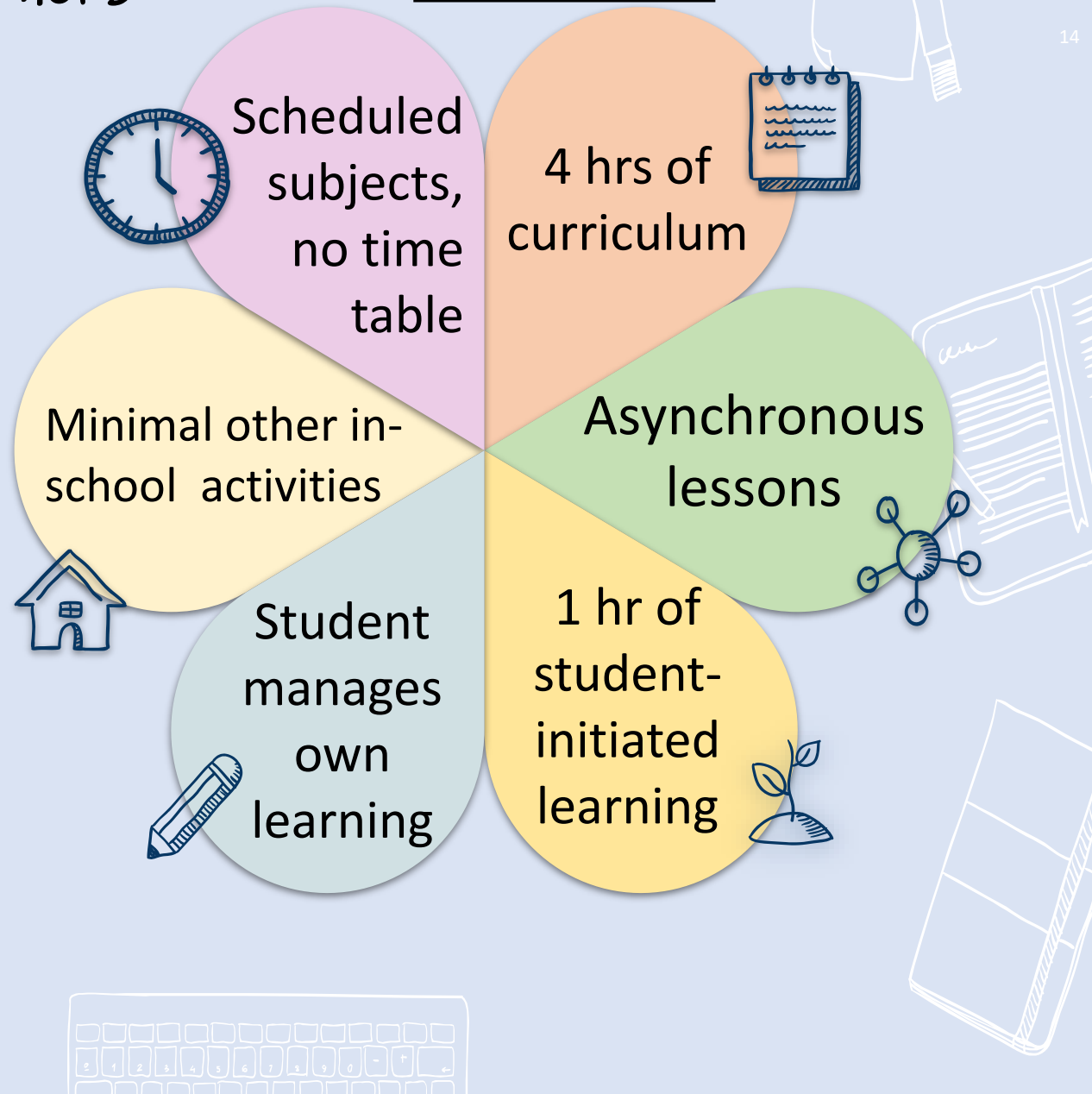
Starting Term 1

Every EVEN Wednesdays

Self-directed and  
independent learners

Passionate and intrinsically  
motivated learners

# A Typical HBL day







# How can I support my child?

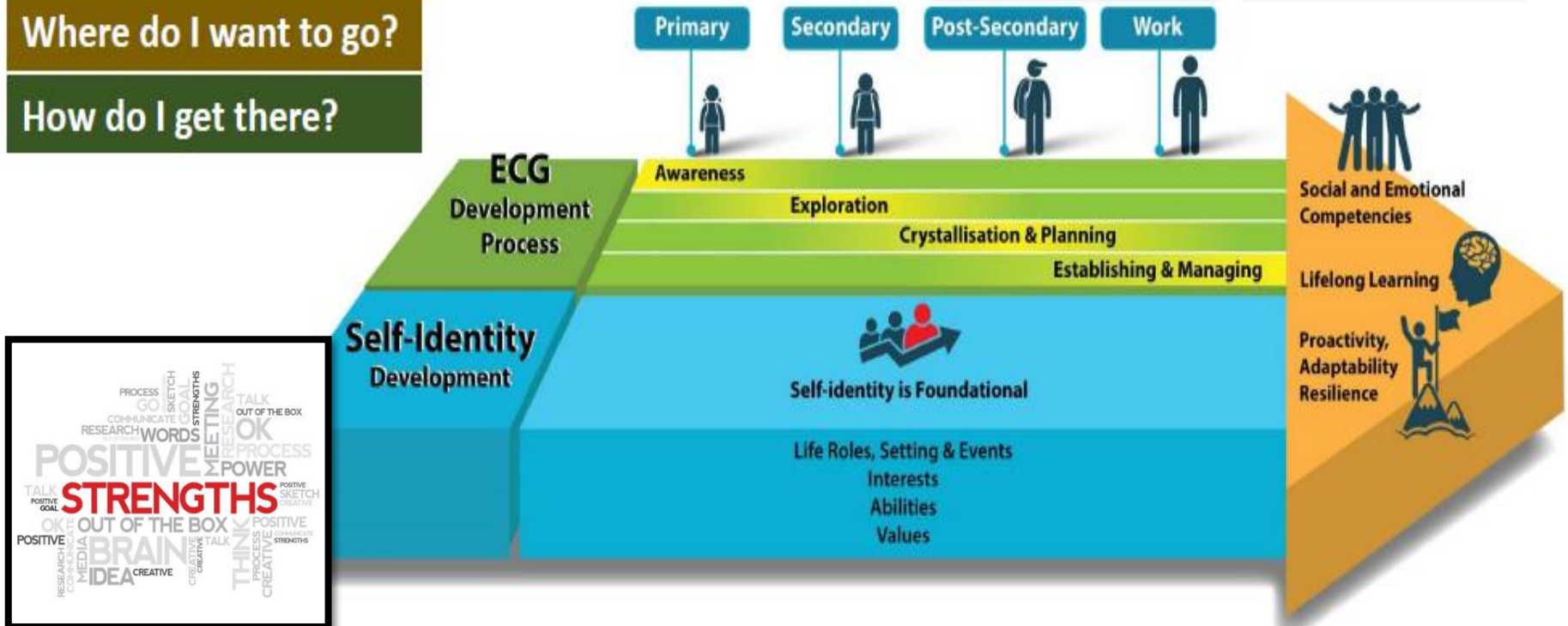
1. Work with your child to find a conducive space for them to learn (e.g. stable WiFi connection, set a learning routine together, etc)
2. Allow your child to take charge of and be accountable for her learning (curriculum & beyond) → Cheer her on, encourage her
3. If you do want to be involved, a simple suggestion is to check in at the end of the day and ask her these questions:
  - What did you learn?
  - How did you learn it?
  - How did you know you learnt it?

For more information on HBL Days and how you can support your child, visit our HBL Days Parent Resource Site





## How do I get there?







**Career Interests**  
Get Started!

**Skills Confidence**  
Get Started!

**Work Values**  
Get Started!

**Learning Styles**  
Get Started!

**Which tool should I start with?**

Every tool here allows you to discover a different aspect of yourself. It will help to bring you a step closer to finding the educational and career pathway most suited for you.

[Find Out More](#)

## Education Guide

No matter which education pathway you are on right now, our Singapore education system offers many choices for the next phase of learning that are suited to your interests, abilities and passion.



### Singapore Education Landscape

Many pathways are worth taking. Find out more about the possible education pathways and plan your next steps.

[Explore More](#)



### Explore Educational Institutions

Use this guide to find out more about the different schools and plan your next education pathway.

[Explore More](#)



### Explore Courses

Compare different courses offered by post-secondary educational institutions.

[Explore More](#)

**MySkillsFuture Portal**  
<https://www.myskillsfuture.sg>





# It's not all about the academic results!

1. Contribute actively in CCA
2. Do well for all the weighted assessments
3. Build a portfolio
  - Work attachments; community/volunteer work
  - CCAs / School / Personal activities, achievements, projects
4. Research on courses and related jobs
  1. Attend outreach activities by IHLs
  2. Website & brochures
  3. Teachers, ECG Counsellors, family/relatives
5. Be prepared for interviews / auditions / trials
  - Good oral communication skills
  - Good personal grooming
  - Positive attitude and outlook helps!

## ECG Counsellor

Email:

[Ang Hui Min@schools.gov.sg](mailto:Ang Hui Min@schools.gov.sg)

OR

Every Monday and Tuesday at  
ECG Room in Library





# Programme

Time	Programme
5.45 pm	Development of Talents to Serve (DOTS) Sec 3 Subj Combination Microsite
6.00 pm	Main Room 1. Principal's Address
6.25 pm	2. Education and Career Guidance (ECG Team) 3. Sec 3 Subject Combination Matters (HOD/Science)
6.55 pm	<b><u>Breakout Rooms</u></b> Time with Form Teachers
7.15 pm	<b><u>Main Room</u></b> Q&A



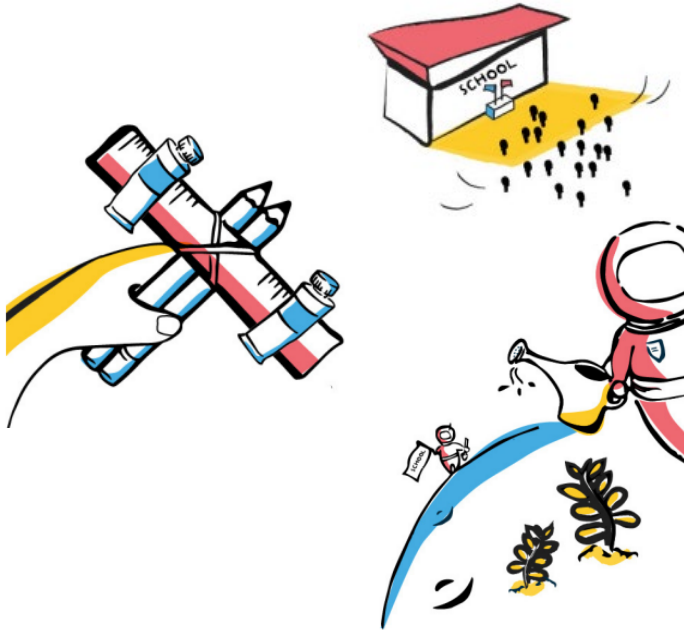
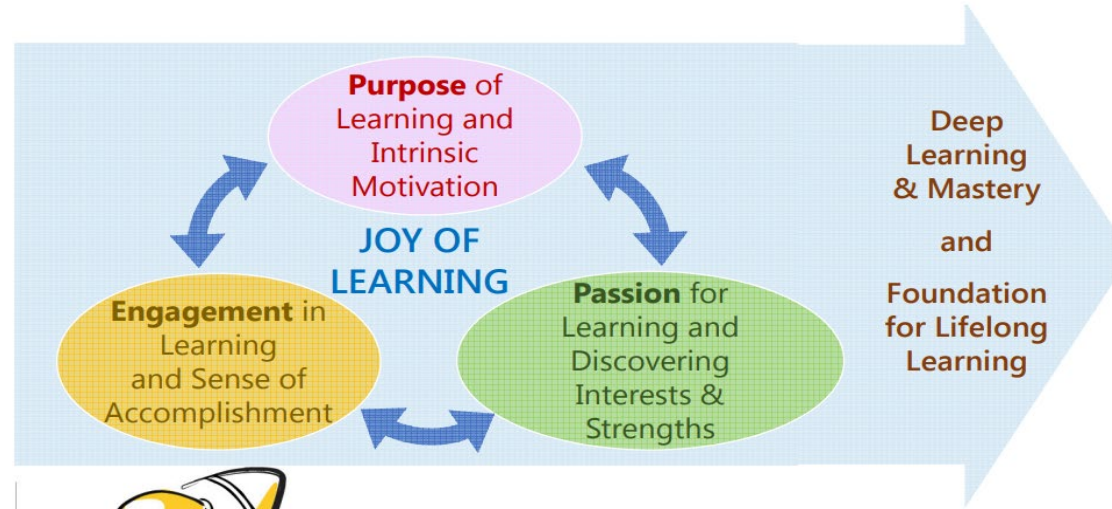


# Briefing for Sec 3E (2023) Subject Combinations



# Key Considerations

## JOY OF LEARNING



### Ask your child questions like

1. What subjects do you enjoy at school?
2. What subjects are you good at? Would you like to continue studying these?
3. What type of learning do you enjoy more? Reading and writing, or hands-on activity?



# Key Considerations

## POST- SECONDARY OPTIONS

- Quality is more important than quantity.
- O-level A Math a pre-requisite to offer H2 Math.
- O-level Pure Science builds stronger foundation, but not a pre-requisite to offer H2 Science.

### L1R5 (for entry into JC)

S/No	JC Name	Science
		Previous (2021) JAE Net L1R5
1	Anderson Serangoon Junior College	11
2	Anglo-Chinese Junior College	8
3	Anglo-Chinese School (Independent)	5
4	Catholic Junior College	13
5	Dunman High School	8
6	Eunoia Junior College	7
7	Hwa Chong Institution	4
8	Jurong Pioneer Junior College	15
9	Nanyang Junior College	6
10	National Junior College	7
11	Raffles Institution	4
12	River Valley High School	8
13	St. Andrew's Junior College	10
14	St. Joseph's Institution	8
15	Tampines Meridian Junior College	13
16	Temasek Junior College	9
17	Victoria Junior College	7
18	Yishun Innova Junior College	20

### ELR2B2 (for entry into Poly)

#### NANYANG POLYTECHNIC ACADEMIC YEAR 2022/23

Courses by Group	2021 JAE Range of Net ELR2B2
<b>MEDIA &amp; DESIGN</b>	
ANIMATION & VISUAL EFFECTS	5 to 12
DIGITAL GAME ART & DESIGN	5 to 12
INTERACTION DESIGN	9 to 17
MOTION GRAPHICS DESIGN	10 to 14
EXPERIENTIAL PRODUCT & INTERIOR DESIGN	9 to 17
VISUAL COMMUNICATION	5 to 15

### Minimum Subject Requirements

Courses	Course Code	Minimum Entry Requirements	
MEDIA & DESIGN			
Mass Communication	N67	<u>Subject</u>	<u>Grade</u>
		a) English Language	1-4
		b) Mathematics (Elementary/Additional)	1-7
		c) Any three other subjects	1-6



# Our Principles

- Calibrated for post-secondary options
- Breadth of choices to cater to different abilities and interests
- Merit-based allocation





# Mathematics, Sciences and Humanities

Elementary Mathematics Additional Mathematics Principles of Accounts (POA)
<b>Pure Sciences</b>
Chemistry Physics Biology
<b>Combined Science</b>
Science (Chemistry, Physics) Science (Chemistry, Biology)
<b>Combined Humanities</b>
HUM (Social Studies, Geography) HUM (Social Studies, History) HUM (Social Studies, Literature)
<b>Full Humanities</b>
Geography History Literature in English

- All students offer E Math.
- Chemistry is compulsory as it opens up more post-Secondary options.
- Social Studies is compulsory.
- Students must offer contrasting subjects for Combined and Full Humanities, e.g. Elective Geography and Full History.



# Coursework Subjects



- Assessment for the above subjects are split into two components: Written Paper (40%) and Coursework (60%).
- Coursework assessment takes place continuously throughout Sec 4.
- Assessment by coursework enables students to express themselves in different ways than writing.



# Qualifying Criteria for 8 subjects

**E**nglish

**M**athematics

**S**cience

**B**est Humanities

(Geog / Hist / E. Lit)

- Average EMSB as an indicator of students' ability to manage their learning well
- EMSB 65% (overall results) → eligible to offer 8 subjects



# Subject-Specific Requirements

Subject	Qualifying Criteria
Pure Sciences	At least 60% (overall results) for Sec 2 Science and Math
Additional Math	At least 60% (overall results) for Sec 2 Math
Drama	Completed Drama Elective Programme at Sec 2
Music	Pass the Enhanced Music Programme Selection Test

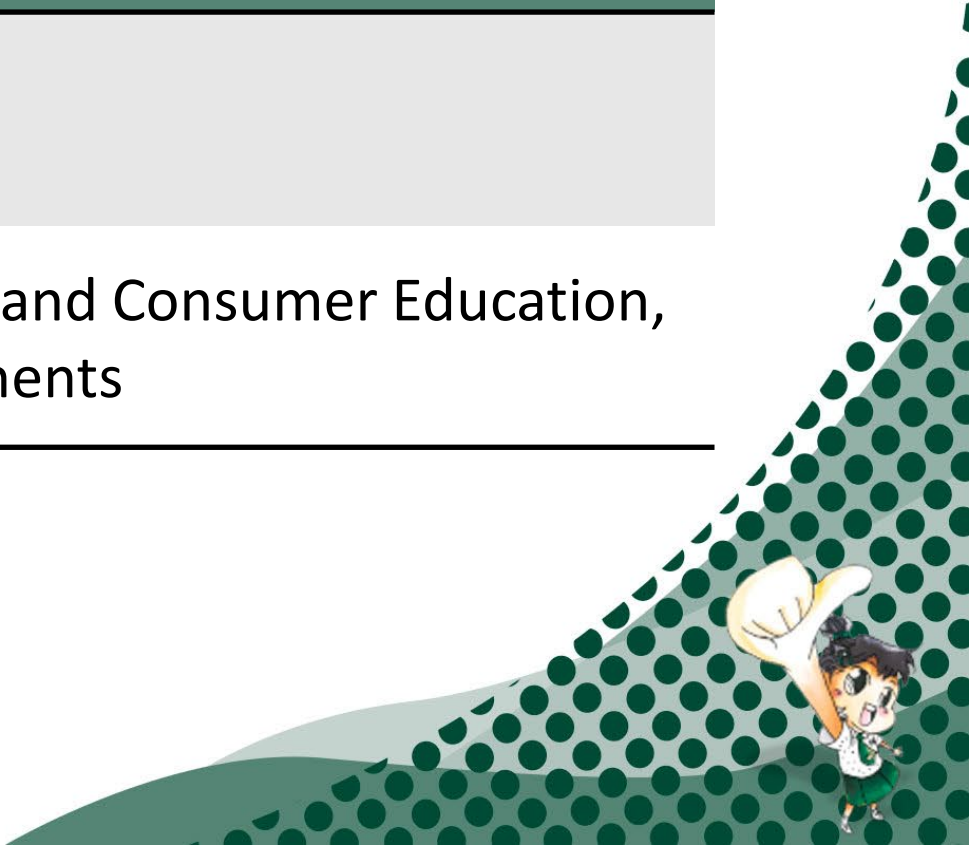




# Subject-Specific Requirements

- In the event of over-subscription for Art, or Nutrition & Food Science subjects (capped at 20 students each), selection criteria applies.

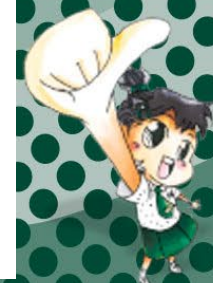
Subject	Selection Criteria
Art	Overall results for Sec 2 Art
Nutrition & Food Science	Overall results for Sec 2 Food and Consumer Education, excluding Groupwork components



# Subject Combinations

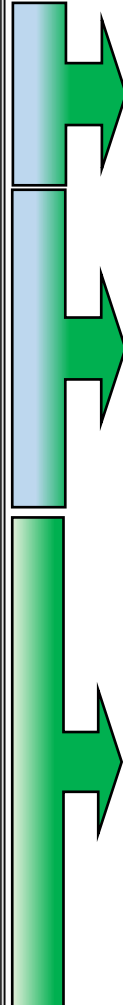
7 subjects		
	Double Pure Sciences	Combined Science
Languages	1. EL 2. MTL	1. EL 2. MTL
E Math	3. E Math	3. E Math
Sciences	4. Chemistry	4a. Sci(P,C)
	5a. Physics	4b. Sci(C,B)
	5b. Biology	
Combined Humanities (Social Studies + Elective)	6a. HUM (SS,G)	5a. HUM (SS,G)
	6b. HUM (SS,H)	5b. HUM (SS,H)
	6c. HUM (SS,L)	5c. HUM (SS,L)
A Math or POA	7. A Math	6a. A Math 6b. POA
Full Humanities		7a. Geography 7b. History 7c. Literature 7d. Drama 7e. Music 7f. Art 7g. NFS
Coursework		

8 subjects		
Combined Science	Double Pure Sciences	Triple Pure Sciences
1. EL	1. EL	1. EL
2. MTL	2. MTL	2. MTL
3. E Math	3. E Math	3. E Math
4a. Sci(P,C)	4. Chemistry	4. Chemistry
4b. Sci(C,B)	5a. Physics	5. Physics
	5b. Biology	6. Biology
5a. HUM (SS,G)	6a. HUM (SS,G)	7a. HUM (SS,G)
5b. HUM (SS,H)	6b. HUM (SS,H)	7b. HUM (SS,H)
5c. HUM (SS,L)	6c. HUM (SS,L)	7c. HUM (SS,L)
6a. A Math	7. A Math	8. A Math
6b. POA		
7a. Geography	8a. Geography	
7b. History	8b. History	
7c. Literature	8c. Literature	
8a. Drama	8d. Drama	
8b. Music	8e. Music	
8c. Art		
8d. NFS		



# Subject Combinations

7 subjects		
	Double Pure Sciences	Combined Science
Languages	1. EL	1. EL
	2. MTL	2. MTL
E Math	3. E Math	3. E Math
Sciences	4. Chemistry	4a. Sci(P,C)
	5a. Physics	4b. Sci(C,B)
	5b. Biology	
Combined Humanities (Social Studies + Elective)	6a. HUM (SS,G)	5a. HUM (SS,G)
	6b. HUM (SS,H)	5b. HUM (SS,H)
	6c. HUM (SS,L)	5c. HUM (SS,L)
A Math or POA	7. A Math	6a. A Math
		6b. POA
Full Humanities		7a. Geography
		7b. History
		7c. Literature
		7d. Drama
		7e. Music
		7f. Art
		7g. NFS
Coursework		



## • Fixed Subjects

1. Pure or Combined Science
2. Physics or Biology
3. Elective Geography, History or Literature

4. \*POA and/or A Math

5. \*One Full Humanities or one Coursework

\* Only applicable for Combined Science Combination





# Subject Combinations

- Fixed Subjects

1. Physics or Biology

2. Elective Geography, History or Literature

3. A Math or POA

4. Geography, History or Literature

5. Drama, Music, Art or NFS

8 subjects		
Combined Science	Double Pure Sciences	Triple Pure Sciences
1. EL	1. EL	1. EL
2. MTL	2. MTL	2. MTL
3. E Math	3. E Math	3. E Math
4a. Sci(P,C) 4b. Sci(C,B)	4. Chemistry 5a. Physics 5b. Biology	4. Chemistry 5. Physics 6. Biology
5a. HUM (SS,G) 5b. HUM (SS,H) 5c. HUM (SS,L)	6a. HUM (SS,G) 6b. HUM (SS,H) 6c. HUM (SS,L)	7a. HUM (SS,G) 7b. HUM (SS,H) 7c. HUM (SS,L)
6a. A Math 6b. POA	7. A Math	8. A Math
7a. Geography 7b. History 7c. Literature	8a. Geography 8b. History 8c. Literature	
8a. Drama 8b. Music 8c. Art 8d. NFS	8d. Drama 8e. Music	

\* Only applicable for Double Pure Science Combination

- Fixed Subjects

1. Physics and/or Biology

2. Elective Geography, History or Literature

- Fixed Subject

3. \*One Full Humanities, Drama or Music



# Subject Combinations

7 subjects		
	Double Pure Sciences	Combined Science
Languages	1. EL 2. MTL	1. EL 2. MTL
E Math	3. E Math	3. E Math
Sciences	4. Chemistry 5a. Physics 5b. Biology	4a. Sci(P,C) 4b. Sci(C,B)
Combined Humanities (Social Studies + Elective)	6a. HUM (SS,G) 6b. HUM (SS,H) 6c. HUM (SS,L)	5a. HUM (SS,G) 5b. HUM (SS,H) 5c. HUM (SS,L)
A Math or POA	7. A Math	6a. A Math 6b. POA
Full Humanities		7a. Geography 7b. History 7c. Literature 7d. Drama 7e. Music 7f. Art 7g. NFS
Coursework		

8 subjects		
Combined Science	Double Pure Sciences	Triple Pure Sciences
1. EL 2. MTL 3. E Math 4a. Sci(P,C) 4b. Sci(C,B)	1. EL 2. MTL 3. E Math 4. Chemistry 5a. Physics 5b. Biology	1. EL 2. MTL 3. E Math 4. Chemistry 5. Physics 6. Biology
5a. HUM (SS,G) 5b. HUM (SS,H) 5c. HUM (SS,L) 6a. A Math 6b. POA 7a. Geography 7b. History 7c. Literature 8a. Drama 8b. Music 8c. Art 8d. NFS	6a. HUM (SS,G) 6b. HUM (SS,H) 6c. HUM (SS,L) 7. A Math 8a. Geography 8b. History 8c. Literature 8d. Drama 8e. Music	7a. HUM (SS,G) 7b. HUM (SS,H) 7c. HUM (SS,L) 8. A Math

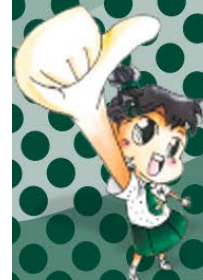
Qualifying Criteria for:	
8 subjects	At least 65% (Overall) in the Average Sec 2 results for EL, Math, Science and Best Humanities (EMSB).
Pure Sciences	At least 60% (Overall) in the results for Sec 2 Science <b>and</b> Math.
A Math	At least 60% (Overall) in the results for Sec 2 Math.
Drama	Completed Drama Elective programme at Sec 2.
Music (EMP)	Pass the EMP Selection Test.

## Notes:

- (1) Class sizes for Art and NFS (Nutrition and Food Science) are capped at 20 each, with selection criteria based on, respectively:
- Overall Sec 2 results for Art, and
  - Overall Sec 2 results for FCE (Food and Consumer Education), excluding Groupwork components.

(2) Students must offer contrasting subjects for Combined and Full Humanities, e.g. Elective Geography and Full History.

(3) Students offering Art, Music or Drama should note that these subjects CANNOT replace the compulsory Humanities subject in L1R5 computation.



# Subject Combination Exercise Timeline

Activity	Period
Release of Criteria and Subject Combination Options to Parents and students	Term 1 Week 9
Sec 2 Subject Combination Trial Exercise <ul style="list-style-type: none"><li>Results will not be released to students but used for planning and deployment purposes.</li></ul>	Term 2 Week 10
Sec 2 Subject Combination Exercise <ul style="list-style-type: none"><li>Information on the exercise will be given to all Sec 2 students in the October Principal's Letter and via PG</li></ul>	Term 4 Week 7
Release of Subject Combination Allocation Results	Term 4 Week 9
Appeal Period	Term 4 Week 9
Release of Class Allocation	Last week of December





# SLIDES AND RESOURCES

ABOUT US • EVENTS • **RESOURCES** • ACHIEVEMENTS • PROGRAMMES • ADMISSION • MEMORIES



WELCOME TO  
**St. Margaret's**  
SECONDARY SCHOOL



## RESOURCES

[Home](#) > [Resources](#) > For Parents

## For Parents

For Students

For Parents

Monthly Principal's Letter

2022 Parent-Teacher Meeting  
(PTM)

Home-Based Learning (HBL)

Parents Gateway (PG)

Leave of Absence

[Monthly Principal's Letter](#)

[2022 Parent-Teacher Meeting](#)

[Home-Based Learning](#)

[Parents Gateway](#)

[Financial Assistance Scheme](#)

[Leave of Absence](#)

[Family Life Education](#)

[Parent Support Group](#)

[Useful Links](#)





# SLIDES AND RESOURCES

St. Margaret's Secondary S...

Home Sec 2-1 to 2-4 ▾ Sec 2-5 to 2-6 ▾ Sec 2-7 ▾ More ▾ 🔍

Navigating your way through.....

Sec 2 Subject Combination

(for Sec 3/2023)

Learning Continuously

<https://go.gov.sg/2022-smss-sec2subjectcombi>



<https://go.gov.sg/2022-smss-sec2subjectcombi>





## Key Dates 2022







WELCOME TO  
**St. Margaret's**  
SECONDARY SCHOOL

## EVENTS



[Home](#) > [Events](#) > [School Calendar](#)

## School Calendar

smsscaldar@gmail.com

Today ◀ ▶ February 2022 ▼

Print [Week](#) **[Month](#)** [Agenda](#) ▼

Sun	Mon	Tue	Wed	Thu	Fri	Sat
30	31	Feb 1	2	3	4	5
T1W5						
Eve of CNY		CHINESE NEW YEAR	CHINESE NEW YEAR	12:50pm Assembly (House Ses		
6	7	8	9	10	11	12
T1W6						
CCA Registration			S3NT PTM		12:50pm CCE	
			Class Committee Training			
			HBL Day for Sec 2s		Sec 3NA PTM	
			+2 more			
13	14	15	16	17	18	19
T1W7						
Release of CCA Allocation			2:30pm English/MT DoTS Story		12:50pm CCE / CCA-CCE	
			Total Defence Day			
			3pm DOTS Science Workshop			



# Key Dates 2022

Event	Date
Parent – Teacher Meeting	27 May 2022
Speech & Prize Giving Day Racial Harmony Day	22 July 2022
End-of-Year Examinations (marking days)	14 and 17 October 2022
Head-start Lessons	25 October to 4 November 2022
Study Camp	7 to 11 November 2022





# 'Commonly' Asked Questions

**Qn: Currently my daughter is undecided on her future career direction. What criteria and guidance can be provided to help her ascertain her direction and therefore a decision on which subjects she should take to help her achieve this?**

- *Students are introduced to [MySkillsFuture Portal](#) during their CCE lessons. They may explore the site to complete the profiling tool and find out more about different industries and professions outside of lesson time.*
- *Students are encouraged to speak to the ECG counsellor about their plans and clarify their doubts.*





# 'Commonly' Asked Questions

ECG

**Qn: How do we help our child to select her subject combinations and future career?**

- *Parents can refer to this comprehensive handbook "Journeying with Our Children, Supporting their Aspirations" in supporting their children's ECG exploration.*
- *Please refer to the following websites for more details.*
  - (1) *MySkillsFuture Portal*
  - (2) *Careers @gov*





# 'Commonly' Asked Questions

CCA

**Qn: Can students change CCA in Sec 2?**

- *We do not encourage students to change CCA, unless the reasons for a change is on medical ground.*
- *As there are bonus points awarded for students who remain in the same CCA over 4 years.*





# 'Commonly' Asked Questions

CCA

**Qn: CCA takes up too much time. CCA finishes at 6 pm and by the time the child returns home, she has no energy to do anything.**

- *CCA is important part of a child's holistic education. It helps to develop a child's qualities and character. We recommend the child to plan and better manage their time.*
- *At the school level, we ensure all CCAs to stop their activities and dismiss the students at 6pm.*







# Commonly Asked Questions

## Qn: [NDLP/PDLP]

**What are the rules and regulations for students on usage of the laptop? We, parents, have a hard time in managing our child screen time.**

- A. Teaching and learning device
  - Device Management Application (DMA) will also be installed in the student's laptop to allow teachers and parents to manage the device and the software.
  - White-listing
- B. Digital Literacies Programme (cyber wellness)
- C. Acceptable Use Policy for laptop and mobile phone
- D. Working with Students and Parents: Screen-time, ethical and responsible use, etc





# 'Commonly' Asked Questions

NDLP/ PLD

**Qn: How can we connect our daughter's PLD to our own printers at home? Also, can the cut off time be extended?**

- *This will be dependent on the DMA options.*
- *You can install applications of your choice, including printer if your DMA option is A. Additionally, with Option B, the parent can take total control of the device after school hours. . In addition to having the ability to install applications of choice, all activities on the device are not logged.*
- *If you would like to adjust your DMA options, please indicate via this form link <https://go.gov.sg/smss-dma-options>*





# Q&A

# Use of PLD

Can we install soft-wares like printer drives?

How to track websites visited by children and if unsuitable, how to block those sites/domains?

This can be done if parents opted for DMA Option A or Option B. Please refer to the announcement titled 'Selecting After-School Device Management Application (DMA) Parent Options for Personal Learning Devices (PLD)' sent out on 12 Oct 2021 for more information on the DMA options.

3) How to manage and monitor screen time?

[control----- >> ----- self regulation]

- DMA Option B (See Qn 2)
- Phone applications?
- OB-Markers Agreement/discussion
- Self Regulation/Self Directed





# Use of PLD

## DEFAULT SETTING

- This is the selected option, if you do not request for either Option A or B. This option presents you with a dashboard from which you can view your child's/ward's browsing activity.

## Option A

- If you wish to have more flexibility with the Personal Learning Device (PLD), you can opt for Option A.
- This option allows you to install applications and to customise your child's/ward's sleep timing, while retaining the web filtering function, to protect your child/ward from unsafe contents.

## Option B

- For parents who wish to have total control of the device after school hours, they can opt for Option B.
- In addition to having the ability to install applications of choice, all activities on the device are not logged.
- It is important to note that by not logging activities, there is no content filtering in place to protect your child from unsafe web content. There is also no sleep hour restriction on the device, which means that the child/ward will be able to use the device at any time

